



HOTEL FÁTIMA



WWW.HOTELFATIMA.COM

HOTEL FÁTIMA



As instalações do Hotel Fátima contam com 117 alojamentos, distribuídos por:

- 9 Suites (com vista para o Santuário de Fátima)
- 103 Quartos Twin/Duplos
- 5 Quartos Adaptados.

Todos os nossos alojamentos contam com:

- TV LED por cabo
- WC privativa
- Cofre



Las instalaciones del Hotel Fátima constan de 117 habitaciones:

- 9 Suites (con vistas al Santuario de Fátima)
- 103 Habitaciones dobles
- 5 Habitaciones Adaptadas

Todos nuestros alojamientos disponen de:

- TV LED por cable
- Baño privado
- Caja fuerte



The facilities at the Hotel Fátima include 117 rooms, distributed as follows:

- 9 Suites (overlooking the Sanctuary of Fatima)
- 103 Twin/Double Rooms
- 5 Adapted Rooms

All our accommodations have:

- LED cable TV
- Private bathroom
- Safe



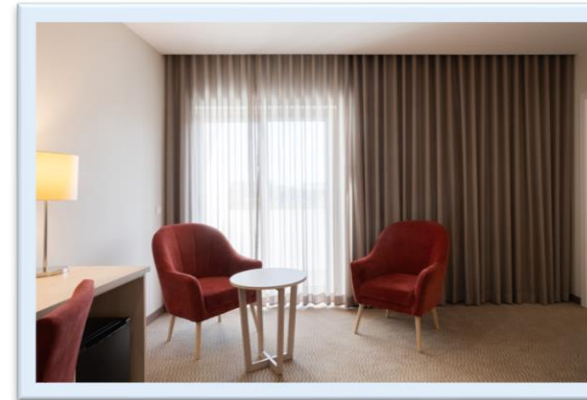
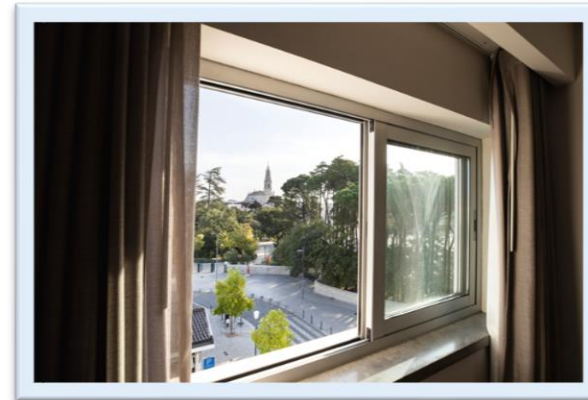
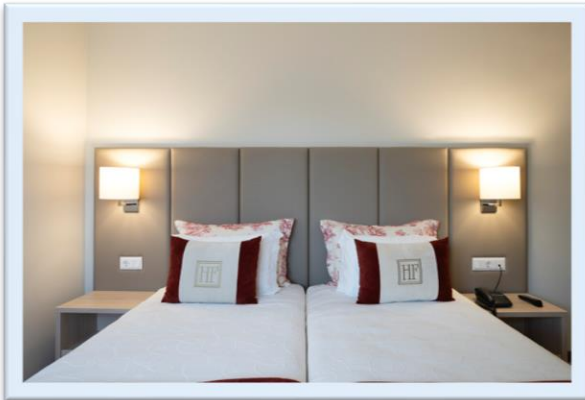
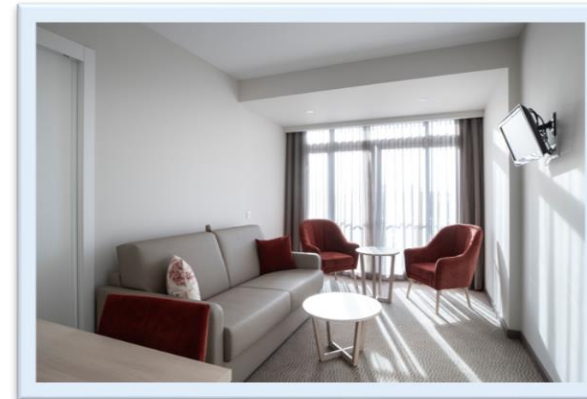
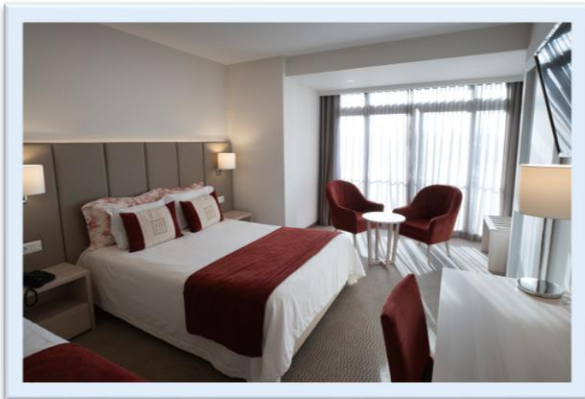
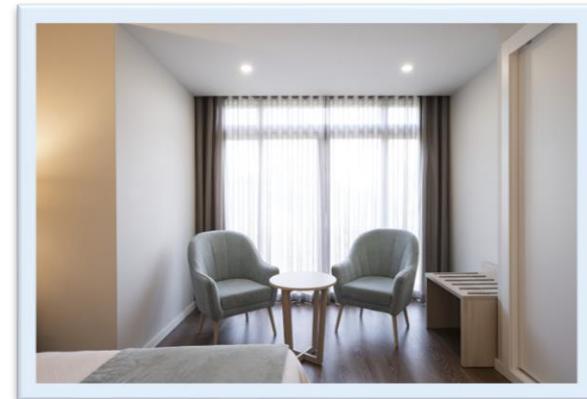
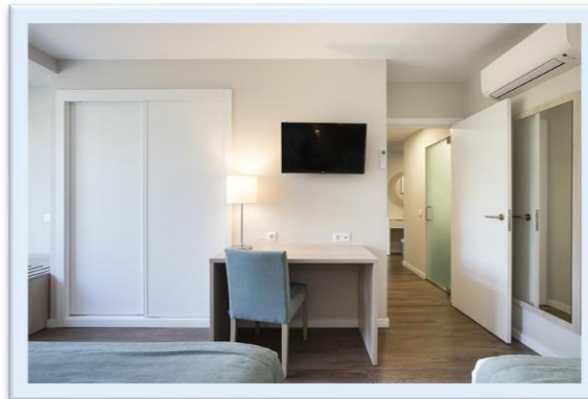
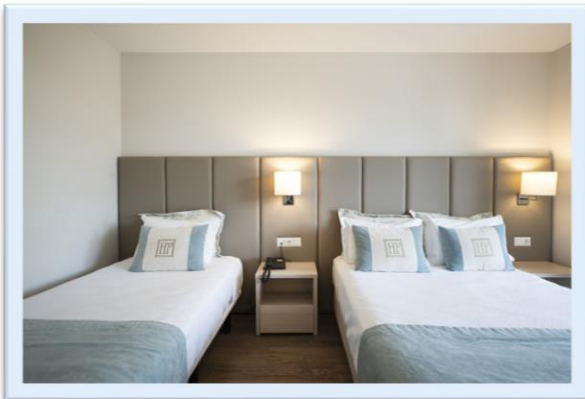
Les installations de l'hôtel Fátima comprennent 117 chambres:

- 9 suites (avec vue sur le Sanctuaire de Fatima)
- 103 chambres doubles/lits jumeaux
- 5 chambres adaptées.

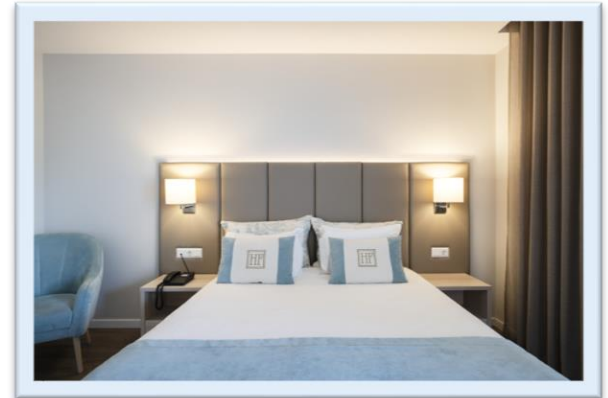
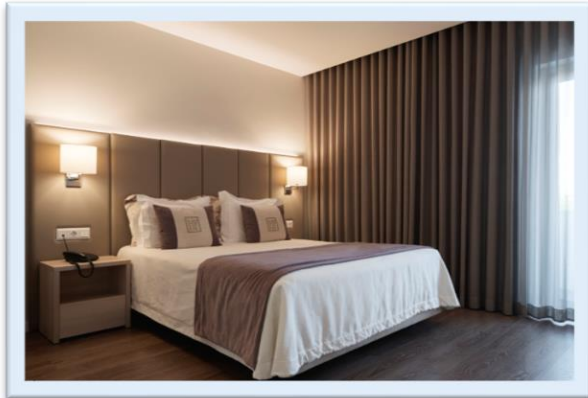
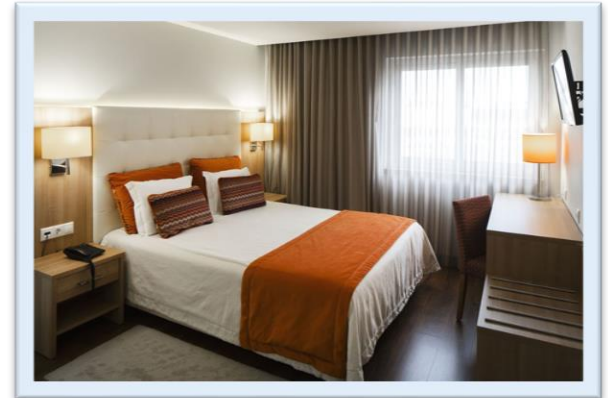
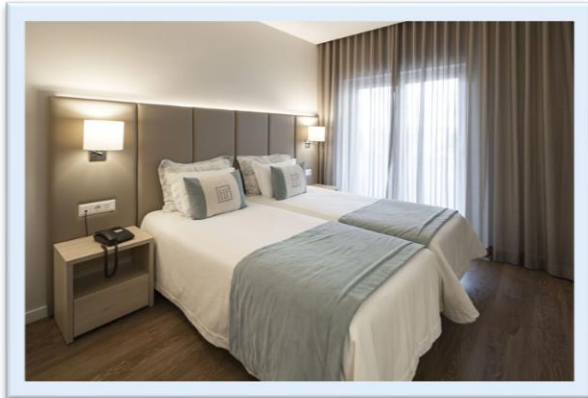
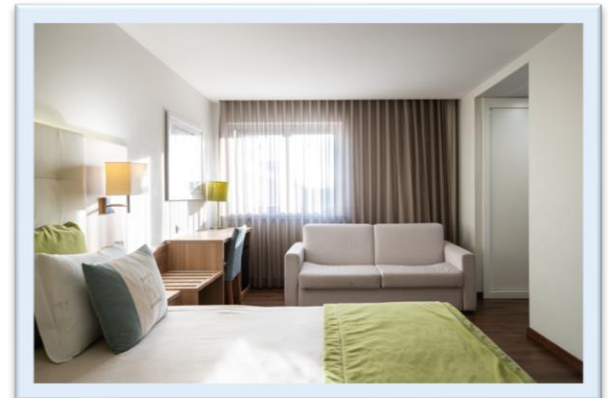
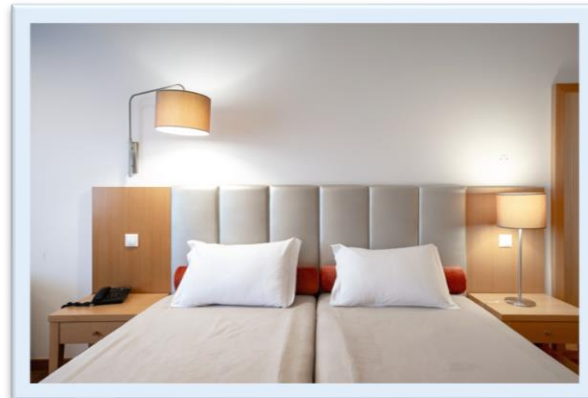
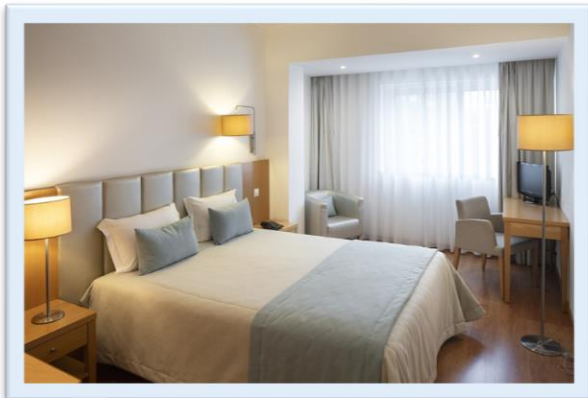
Toutes nos chambres sont équipées de:

- Télévision câblée LED
- Salle de bain privée
- Coffre-fort

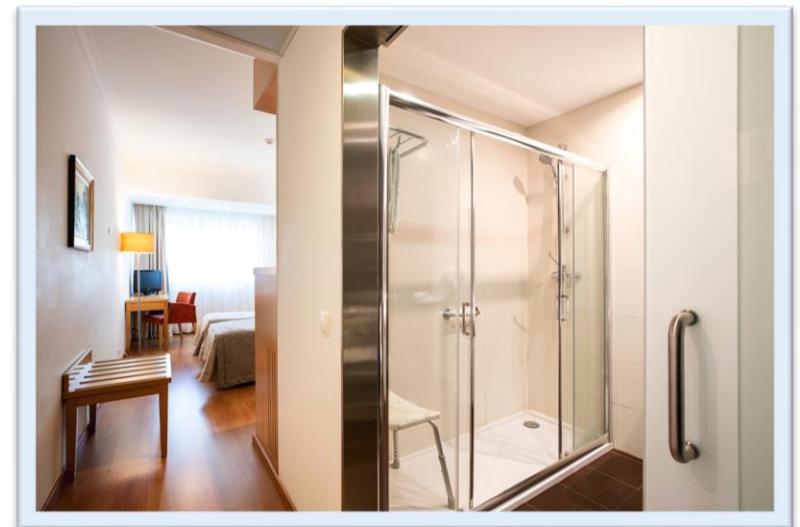
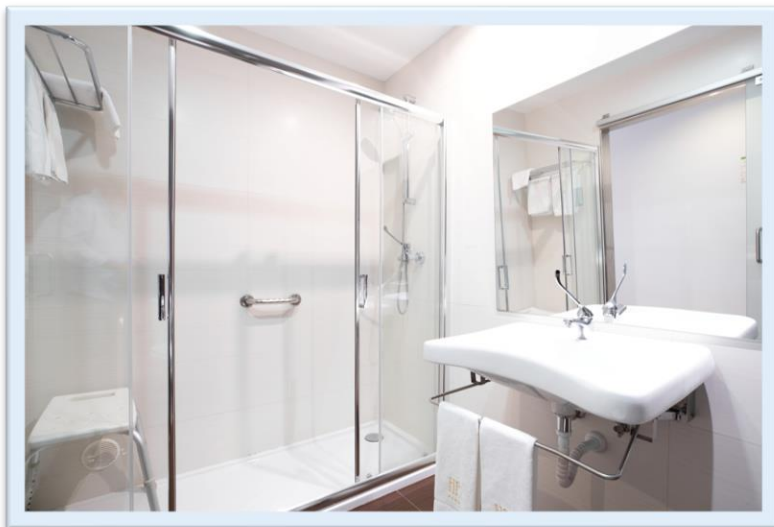
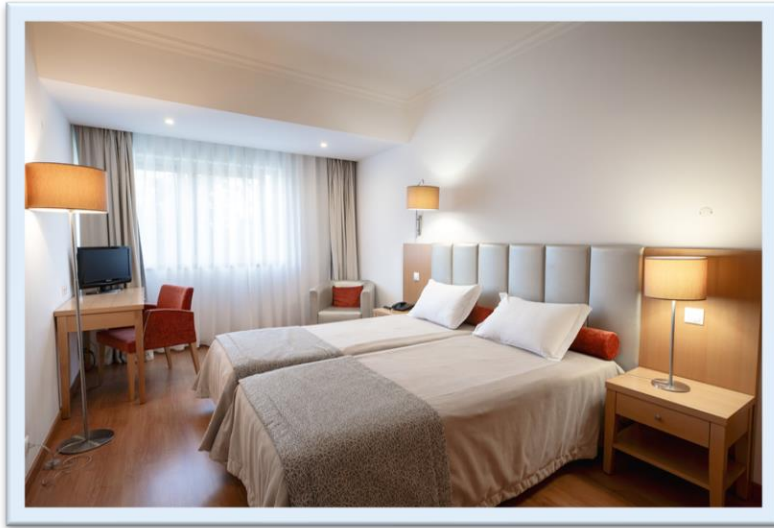
□ HOTEL FÁTIMA - SUITES



□ HOTEL FÁTIMA - QUARTOS / HABITACIONES / ROOMS / CHAMBRES



□ HOTEL FÁTIMA – QUARTOS ADAPTADOS / HABITACIONES ADAPTADAS / ADAPTED ROOMS / CHAMBRES ADAPTÉES



RESTAURANTE / RESTAURANT



Pequeno-Almoço
07H30 – 10H00
Almoço
12H30 – 15H00
Jantar
19h30 – 22h00



Desayuno
07H30 – 10H00
Almuerzo
12H30 – 15H00
Cena
19h30 – 22h00



Breakfast
07H30 – 10H00
Lunch
12H30 – 15H00
Dinner
19h30 – 22h00



Petit-Déjeuner
07H30 – 10H00
Déjeuner
12H30 – 15H00
Dîner
19h30 – 22h00

☐ RESTAURANTE / RESTAURANT



- Aberto todos os dias do ano
- Pratos do dia
- Serviço “a la carte”
- Gastronomia Tradicional Portuguesa
- Ambiente de Conforto e de Requite



- Abierto todos los días del año
- Platos del día
- Servicio a la carta
- Cocina tradicional portuguesa
- Confort y sofisticación



- Open every day of the year
- Dishes of the day
- A la carte service
- Traditional Portuguese cuisine
- Comfortable and elegant atmosphere



- Ouvert tous les jours de l'année
- Plats du jour
- Service à la carte
- Cuisine traditionnelle portugaise
- Confort et élégance

EVENTOS / EVENTS / ÉVÉNEMENTS



- 8 Salas Multiusos
- Equipamento Multimédia e Audiovisual
- Várias disposições
- Wi-Fi em todas as salas



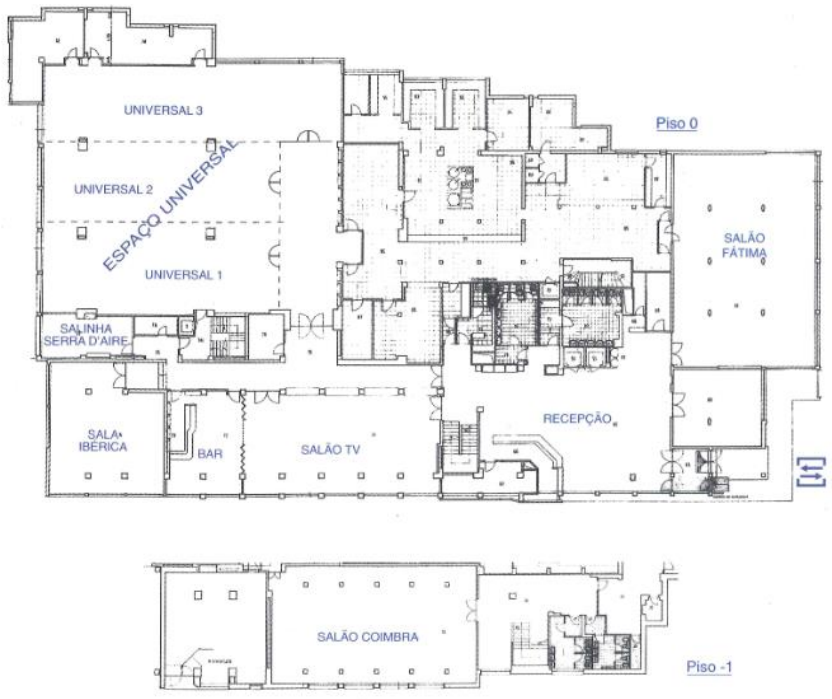
- 8 salas multifuncionales
- Equipamiento multimedia y audiovisual
- Varias configuraciones
- Wi-Fi en todas las salas



- 8 Multipurpose Rooms
- Multimedia and Audiovisual Equipment
- Various layouts
- Wi-Fi in all rooms

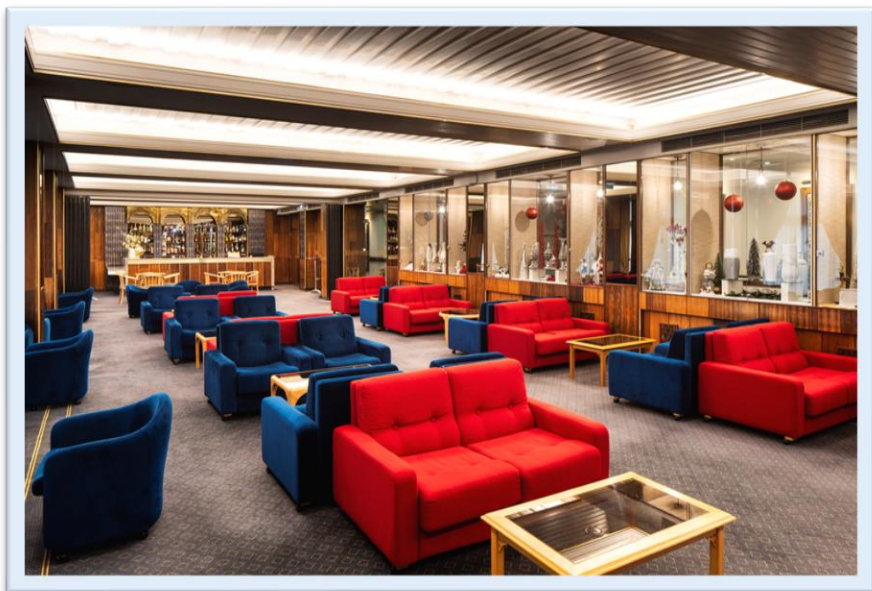
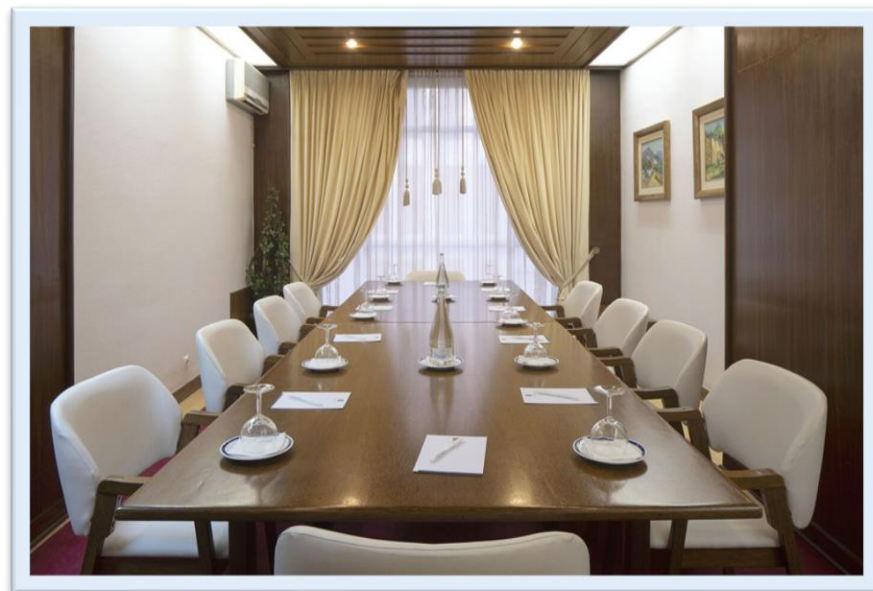
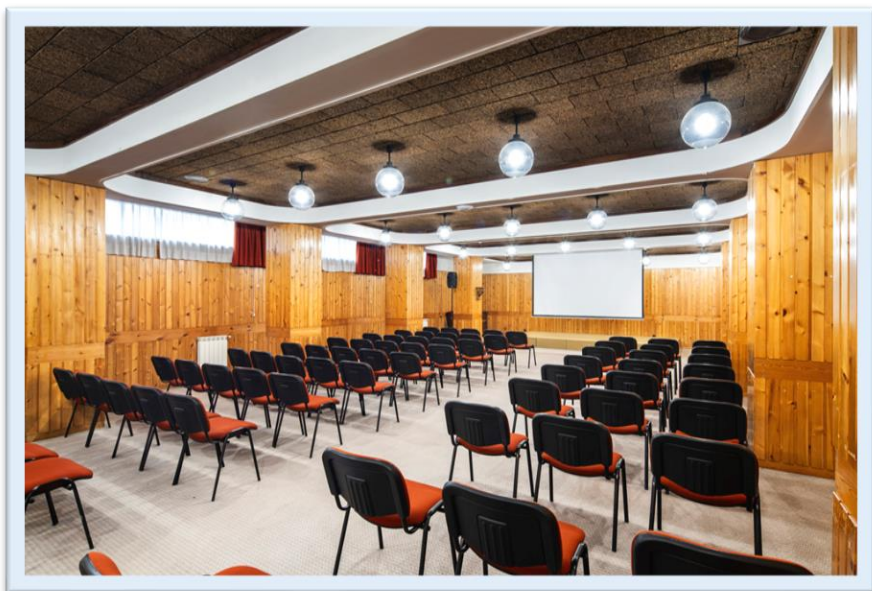


- 8 salles polyvalentes
- Équipement multimédia et audiovisuel
- Différents aménagements
- Wi-Fi dans toutes les salles



SALAS MULTIUSOS	PISO							
		Medidas em Metros	Plateia	Escola	Mesa em "U"	Recepção	Banquete	Altura
Salão TV	R/C	128	150	100	-	200	-	3
Salão Fátima	R/C	216	200	100	-	200	150	3
Espaço Universal	R/C	500	600	300	70	600	500	3
Sala Universal 1	R/C	126	150	75	30	100	100	3
Sala Universal 2	R/C	147	180	90	40	120	120	3
Sala Universal 3	R/C	175	200	90	40	120	120	3
Sala Ibérica	R/C	100	60	40	22	60	60	2,7
Salinha Serra D'Aire	R/C	24	24	12	12	15	12	2,8
Salão Coimbra	-1	200	200	100	50	150	-	3,1

EVENTOS / EVENTS / ÉVÉNEMENTS



CONTACTOS / CONTACTS



Beatriz Rasteiro Pereira

comercial@hotelfatima.com

Luís Filipe

reservations@hotelfatima.com

Tânia Barreiro

director@hotelfatima.com



Rua João Paulo II, Nº 241
2495-451 Fátima



+351 249 530 760
+351 932 533 306